

## ESC CORPORATE OFFICE

302 South Joplin Ave. | Joplin, MO 64801 | P: (417)781-0352 | F: (417)781-1234 or (417)781-0563

## COMMUNITY DEVELOPMENT DEPARTMENT

**ANDERSON** - McDonald County | 712 South Highway 59 | Anderson, MO 64831 | P: (417)845-6011 | F: (417)845-6012

**LAMAR** - Barton County | 816 A West 12th Street | Lamar, MO 64759 | P: (417) 682-5591 | F: (417)682-5592

**JOPLIN** - Jasper County | 302 South Joplin Ave. | Joplin, MO 64801 | P : (417)781-0352 | F : (417)781-1234 or (417)781-0563

**CARTHAGE** - Jasper County | 739 East 7th Street | Carthage, MO 64836 | P : (417)388-7030 | F : (417)313-8545

**NEOSHO** - Newton County | 116 North Jefferson Street | Neosho, MO 64850 | P: (417)451-2206 | F: (417)451-9626

## HOME REPAIR DEPARTMENT

1924 West 4th Street | Joplin, MO 64801 | P : (417)781-4437 | F : (417)781-1961

## HOUSING DEPARTMENT

302 South Joplin Ave., P.O. Box 207 | Joplin, MO 64801 | P : (417)781-0352 | F : (417)781-1234 or (417)781-0563

## WEATHERIZATION DEPARTMENT

1924 West 4th Street | Joplin, MO 64801 | P : (417)781-4437 | F : (417)781-1961

## WOMEN'S HEALTH & FAMILY PLANNING

**JOPLIN** | 302 South Joplin Ave. | Joplin, MO 64801 | P: (417)781-4788 | F: (417)781-1234 or (417)781-0563

**NEOSHO** | 116 North Jefferson | Neosho, MO 64850 | P: (417)451-2255 | F: (417)781-1234

**PINEVILLE** | 500 Olin Street | Pineville, MO 64856 | P: (417)781-4788 or (417)223-4351  
F: (417)781-1234 or (417)781-0563

## HEAD START & EARLY HEAD START

**CORPORATE OFFICE** | 302 S. Joplin Ave, P.O. Box 207 | Joplin, MO 64801 | P: (417)781-0352  
F: (417) 781-1234 or (417)781-0563

**ANDERSON EARLY HEAD START** | 713 Anderson St. | Anderson, MO 64831 | P: (417)845-8971 | F: (417)845-8972

**ANDERSON HEAD START** | 712 South 59 Hwy. | Anderson, MO 64831 | P: (417)845-6644 | F: (417)845-8219

**CARL JUNCTION HEAD START** | 206 Roney, P.O. Box 4 | Carl Junction, MO 64834 | P: (417)649-5746 | F: (417)649-7981

**CARTHAGE HEAD START/EARLY HEAD START** | 1810 Baker Boulevard | Carthage, MO 64836 | P: (417)359-8870 or 358-7273  
F: (417) 359-9168

**GOLDEN CITY COMBINATION HEAD START** | 400 North Main Street | P.O. Box 221 | Golden City, MO 64748  
P: (417)537-8393 | F: (417)537-0012

**GRANBY HEAD START** | 550 Fortune Teller Road | Granby, MO 64844 | P: (417)472-7118 | F: (417)472-7248

**LAMAR EARLY HEAD START** | 816 A West 12th Street | Lamar, MO 64759 | P: (417)681-0451 | F: (417)681-0066

**LAMAR HEAD START** | 1806 Hagny Street | Lamar, MO 64759 | P: (417)682-5744 | F: (417)682-3880

**LONGVIEW HEAD START** | 16381 E. State Hwy. 76 | Rocky Comfort, MO 64861 | P: (417)628-3200 | F: (417)628-3233

**NEOSHO EARLY HEAD START** | 116 North Jefferson | Neosho, MO 64850 | P: (417)451-5507 | F: (417)451-4847

**NEOSHO HEAD START/EARLY HEAD START** | 750 National Guard Rd. | Neosho, MO 64850 | P: (417)451-5709 or (417)455-0885

**NOEL HEAD START** | 628 Johnson Drive | Noel, MO 64854 | P: (417)475-6450 | F: (417)475-7377

**NORTH JOPLIN EARLY HEAD START** | 1706 East 4th Street | Joplin, MO 64801 | P: (417)726-5208 | F: (417)726-5218

**CARTHAGE EARLY HEAD START** | 739 East 7th Street | Carthage, MO 64836 | P: (417)437-0857 | F: (417)313-8545

**NORTH JOPLIN HEAD START/EARLY HEAD START** | 1200 North Main Street | Joplin, MO 64802 | P: (417)781-4497  
F: (417)781-6660

**SARCOXIE HEAD START** | 101 North 17th Street | P.O. Box 608 | Sarcoxie, MO 64862 | P: (417)548-7325 | F: (417)548-0012

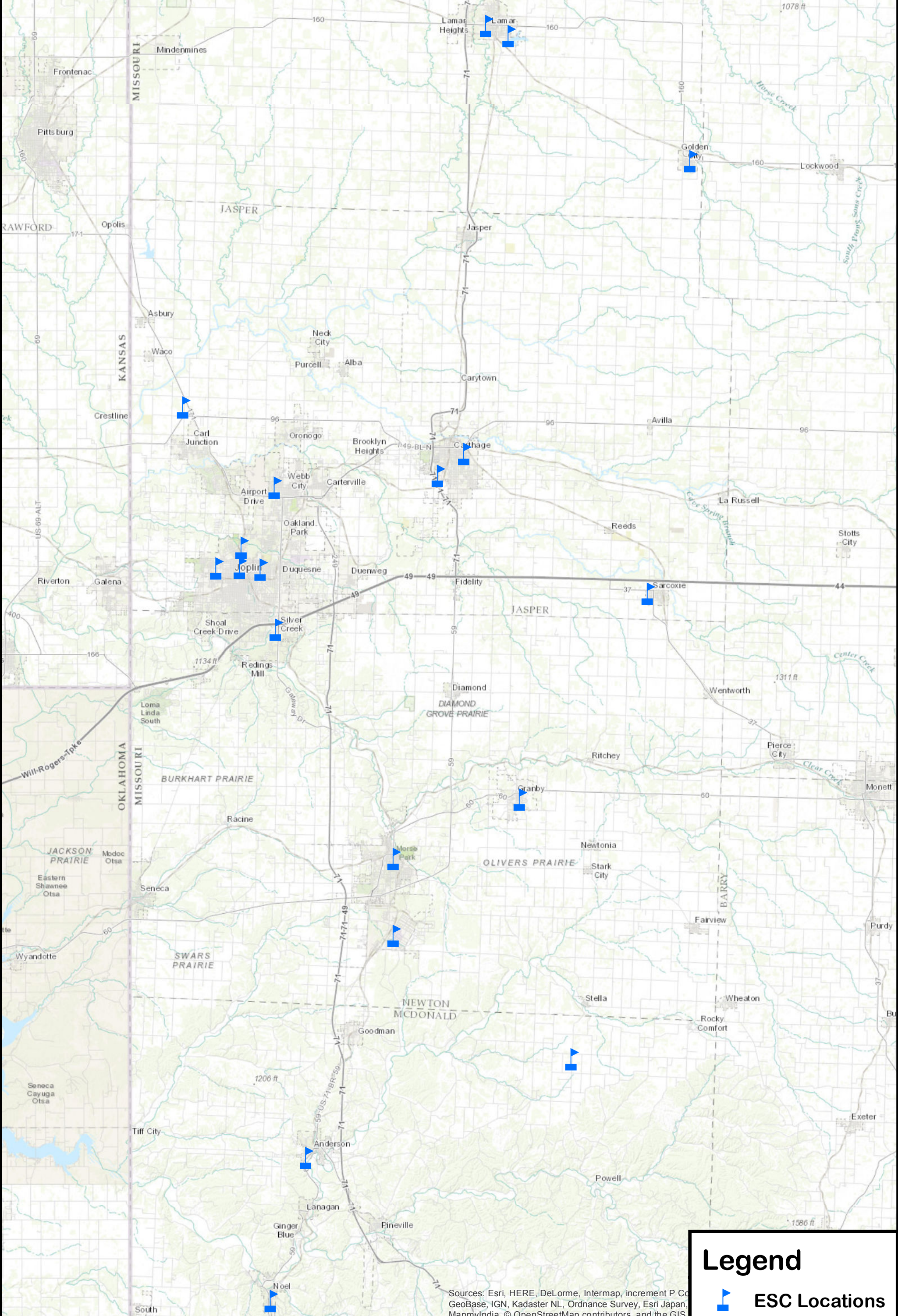
**SOUTH JOPLIN EARLY HEAD START** | 4230 South Richard Joseph Boulevard West | Joplin, MO 64804 | P: (417)781-1179  
F: (417)781-1187

**SOUTH JOPLIN HEAD START/EARLY HEAD START** | 4302 South Richard Joseph Boulevard West | Joplin, MO 64804  
P: (417)781-5728 | F: (417)206-3319

**WEBB CITY HEAD START** | 300 North College | Webb City, MO 64870 | P: (417)673-5967 | F: (417)673-8041



# Economic Security Corporation Locations



**Legend**

 ESC Locations

Sources: Esri, HERE, DeLorme, Intermap, increment P Co, GeoBase, IGN, Kadaster NL, Ordnance Survey, Esri Japan, MapmyIndia, © OpenStreetMap contributors, and the GIS